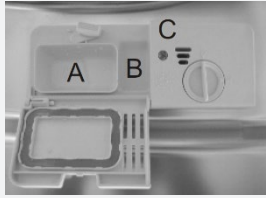
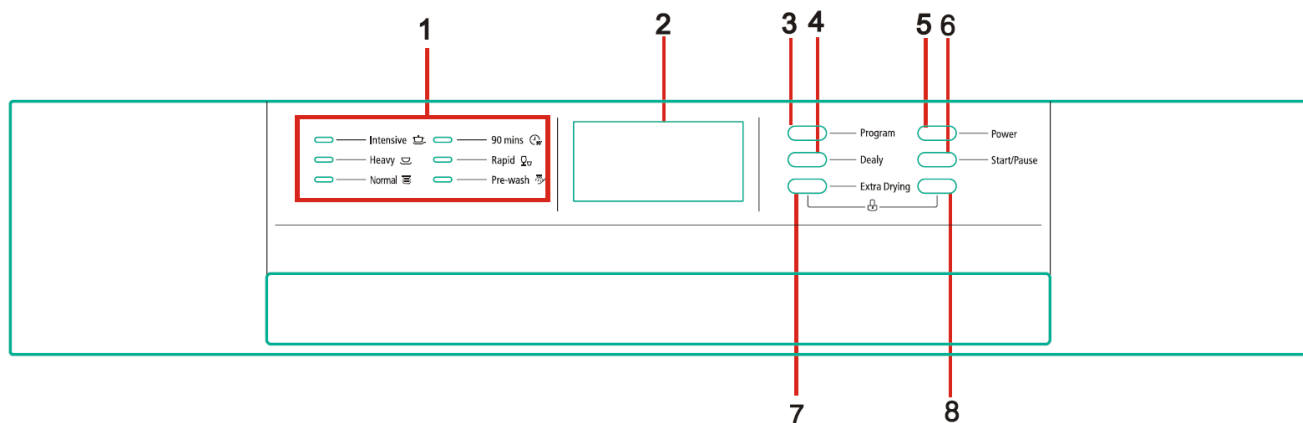


Quick Operating Guide

Switch on the appliance.	Open the door, press the On/Off button to switch on the appliance.
Fill the detergent dispenser.	<p>Compartment A: For each wash cycle.</p> <p>Compartment B: For programs with pre-wash only. (Follow the user instructions)</p> 
Check the rinse aid level.	<p>Mechanical indicator C.</p> <p>Electric indicator on control panel (if provided).</p>
Load the baskets.	Scrape off any large food particles. Soften remnants of burnt food in pans, then load the baskets. Refer to the dishwasher loading instructions.
Select a program.	Close the door, press the Program button until the selected program lights up.
Running the dishwasher.	Turn on the water tap and press the Start/Pause Button. The machine will start working after about 10 seconds.
Changing the program.	<ol style="list-style-type: none"> 1. A running cycle can only be modified if it has been running for a short time. Otherwise, the detergent may have already been released and the water already drained. If in this case, the detergent dispenser must be refilled. 2. Press the Start/Pause button, the machine will be in standby state, press the program button more than 3 seconds then you can change the program to the desired cycle setting. 3. Press the Start/Pause Button, the dishwasher will run after 10 seconds.
Adding forgotten dishes to the dishwasher.	<ol style="list-style-type: none"> 1. Press the Start/Pause Button to stop the washing. 2. Open the door a little. 3. After the spray arms stop working, you can open the door completely. 4. Add forgotten dishes. 5. Close the door. 6. Press the Start/Pause Button, the dishwasher will run after 10 seconds. <p>Warning: Open the door carefully as hot steam may be released.</p>
If the appliance is switched off during a wash cycle.	If the appliance is switched off during a wash cycle, when switched on again please re-select the washing cycle and operate the dishwasher according to the original Power-on state.
Switch off the appliance.	<p>When the working cycle is finished, the buzzer of the dishwasher will sound 8 times, then stop.</p> <p>Turn off the appliance using the On/Off Button.</p> <p>If the appliance was under standby mode, it will power off automatically after 30 minutes without any operation.</p>
Turn off the water tap, unload the dishes.	<p>Warning: Wait a few minutes (about 15 minutes) before unloading the dishwasher to avoid scalding, as the dishes and utensils are still hot and more susceptible to breaking.</p> <p>Unload the appliance, starting from the lower basket.</p>

Operating Instructions

Control Panel



1. Program indicators: To show which program you have chosen;
2. Display screen: To show the reminding time and the state (running state, delay time etc)
3. Program Button: To Press the button to select appropriate Program.
4. Delay Button: To Press the button to delay.
5. Power Button: To turn on/off the power supply.
6. Start /Pause button: To start the selected washing program or pause the washing program when the machine is working.
7. Extra dry Button: Press the button to select the Extra dry function.
8. Child lock button: Press the two buttons simultaneously to lock the program.

Dishwasher Features

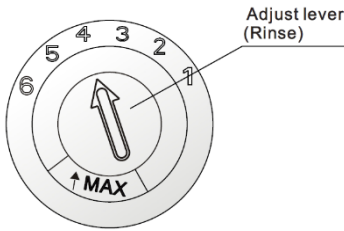


1. Upper Basket
2. Inner Pipe
3. Lower Basket
4. Dispenser
5. Cup Shelf
6. Spray Arms
7. Filter Assembly
8. Aqua Stop
9. Drain Pipe

Operating Instructions

Adjusting Rinse Aid Dispenser

The rinse aid dispenser has six or four settings. Always start with the dispenser set on "4". If spots and poor drying are a problem, increase the amount of rinse aid dispensed by removing the dispenser lid and rotating the dial to "5". If the dishes still are not drying properly or are show spots, adjust the dial to the next higher lever until your dishes are spot-free. The recommended setting is "4". (Factory value is "4".)



NOTE: Increase the dose if there are drops of water or lime spots on the dishes after washing. Reduce it if there are sticky whitish stains on your dishes or a bluish film on glassware or knife blades.

Detergent

Detergents have chemical ingredients that are necessary to remove dirt, crush dirt and transport it out of the dishwasher. Most of the commercial quality detergents are suitable for this purpose.

There are 3 types of detergents:

1. With phosphate and with chlorine
2. With phosphate and without chlorine
3. Without phosphate and without chlorine

Normally new pulverised detergent is without phosphate. Thus, the water softener function of phosphate is not given. If detergents without phosphate are used in the case of hard water often white spots appear on dishes and glasses. In this case, please add more detergent to reach better results. Detergents without chlorine do only bleach a little. Strong and coloured spots will not be removed completely. In this case, please choose a program with a higher temperature.

Concentrated Detergent

Based on their chemical composition, detergents can be split in two basic types:

- Conventional, alkaline detergents with caustic components
- Low alkaline concentrated detergents with natural enzymes

The use of normal washing programs in combination with concentrated detergents reduces pollution and is good for your dishes; these wash programs are specifically matched to the dirt-dissolving properties of the enzymes of the concentrated detergent. For this reason normal wash programs in which concentrated detergents are used can achieve the same results that can otherwise only be achieved using intensive programs.

Detergent Tablets

Detergent tablets of different brands dissolve at different speeds. For this reason, some detergent tablets cannot dissolve and develop their full cleaning power during short programs. Therefore, please use long programs when using detergent tablets, to ensure the complete removal of detergent residuals.

Detergent Dispenser

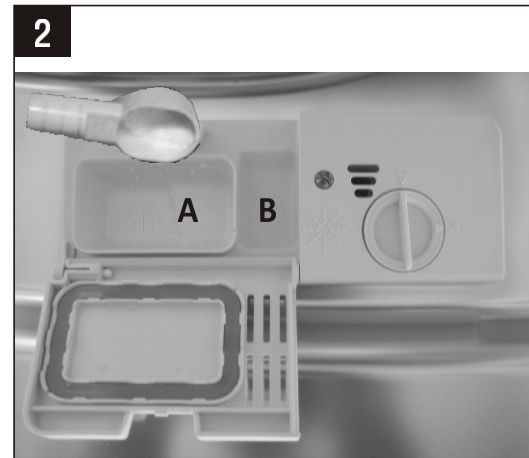
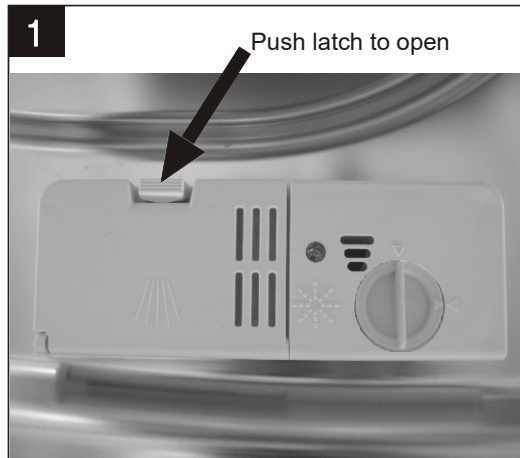
The dispenser must be refilled before the start of each wash cycle following the instructions provided in the wash cycle table. Your dishwasher uses less detergent and rinse aid than a conventional dishwasher. Generally, only one tablespoon of detergent is needed for a normal wash load. More heavily soiled items need more detergent. Always add the detergent just before starting the dishwasher, otherwise it could get damp and will not dissolve properly.

Operating Instructions

Proper Use of Detergent

Use only detergent specifically made for the use in dishwashers. Keep your detergent fresh and dry. Don't put powdered detergent into the dispenser until you're ready to wash dishes.

Adding Detergent to Dispenser



- A. For main wash detergent.
B. For pre-wash detergent.

Fill in Detergent

1. Fill the detergent dispenser with detergent. The marking indicates the dosing levels.
Note: Please observe the manufacturers dosing and storage Recommendations as stated on the detergent packaging.
2. Close the lid and press until it locks in place.
3. If the dishes are heavily soiled, place an additional detergent dose in the pre-wash detergent chamber. This detergent will take effect during the pre-wash phase.

NOTE:

- If the lid is closed: push the latch to open.
- Always add the detergent just before starting each wash cycle. Only use branded detergent and rinse aid for dishwasher.
- Please be aware that soiling levels and water hardness can affect wash results.
- Please observe the manufacturer's recommendations on the detergent packaging.



WARNING

Dishwasher detergent is corrosive. Take care to keep it out of reach of children.